



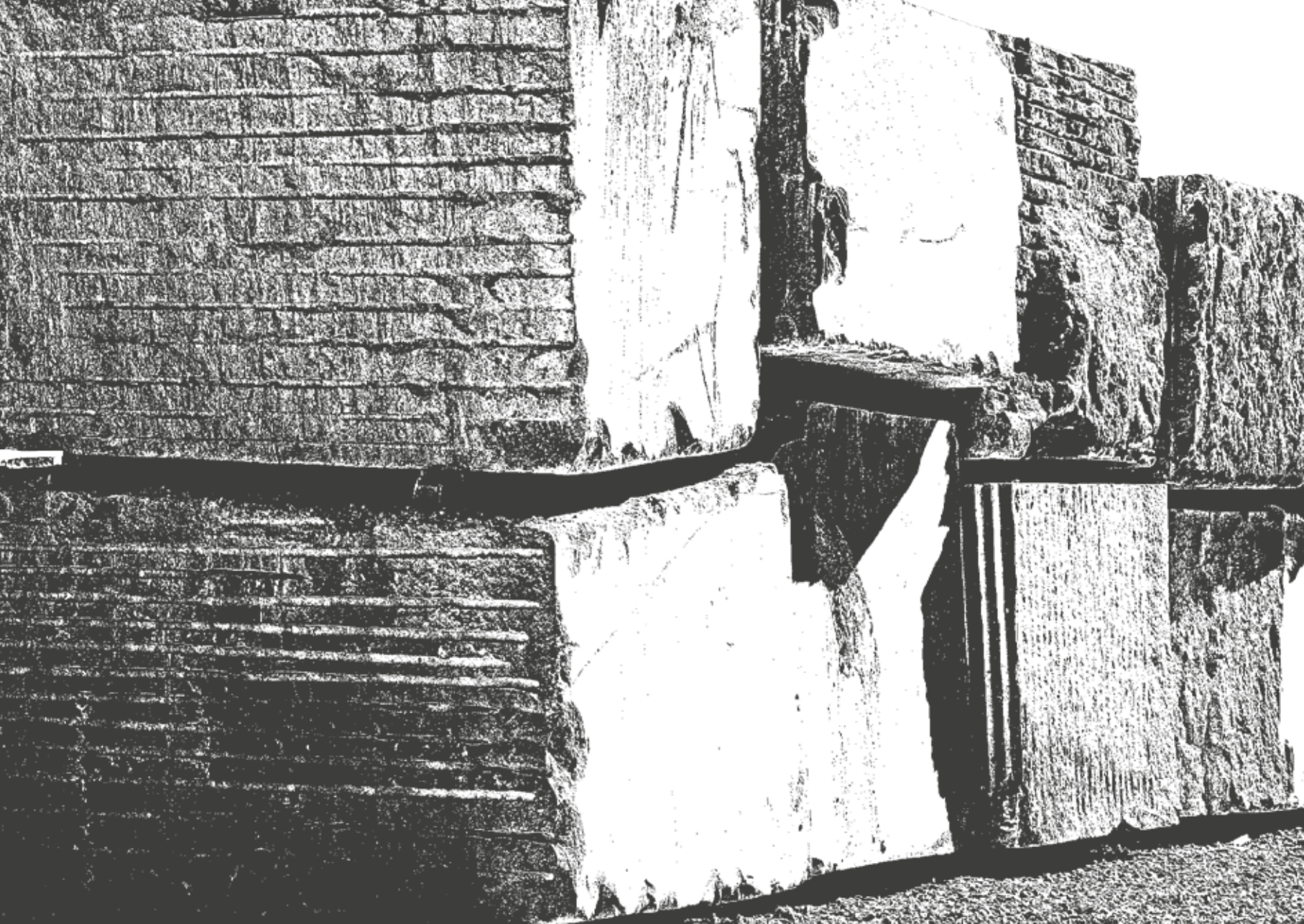
**KSM**

GROUP

SELECT  
YOUR OWN  
NATURAL  
MASTERPIECE  
AT KSM GROUP

Just a few of our natural stone selections available.





**TOTAL DEDICATION TO YOUR VISION**





<b>MARBLE</b>	<b>Pg. 4 - 19</b>
<b>TRAVERTINE</b>	<b>Pg. 20 - 27</b>
<b>MC</b>	<b>Pg. 28 - 39</b>
<b>ONYX</b>	<b>Pg. 40 - 51</b>
<b>TRAONYX</b>	<b>Pg. 52 - 55</b>



## KSM GROUP

Kara Sazeh Matin (KSM) Grubu çeşitli inşaat taş (mermerit, traverten, granit, ve mc) ürünleri üretmek amacıyla kurulmuş ve inşaat sektöründe kullanılan en güzel ve en kaliteli yapı boya ları üretmektedir. KSM grubu yerli uzmanların bilim ve deneyimlerinin yanısı ra dünyanın en son duvarcılık ve hazırlık teknoloji ve makinelerini bir araya getirerek, yerli ve yabancı müşterilerin memnuniyetini kazanmaktadır.

**KSM grubu olarak amacımız, müşterilerinin ihtiyaçlarını karşılayan değerli ve kaliteli ürünler üretmektir.**

Mostafa Eshghparast  
Genel Müdür

Kara Sazeh Matin Engineering Company has gathered a collection made of the best and the most beautiful paints used in building construction, with the aim of manufacturing and processing a wide range of building stones, especially marble, travertine, granite and MC. Utilizing the knowledge of domestic specialists and experts and applying the latest technologies in cutting and preparing domestic stones, Kara Sazeh Matin Engineering Company has been able to satisfy both domestic and foreign customers.

**Our objective is to manufacture the valuable and high-quality products complying with customer needs.**



The background of the entire image is a high-contrast, black and white marble pattern. The pattern consists of a dense network of thin, irregular white veins and streaks that crisscross the dark black background, creating a complex, organic texture. The veins vary in thickness and direction, some running diagonally, others horizontally or vertically, and some branching out like roots or cracks.

# MARBLE

## COLLECTION

PARS BLACK





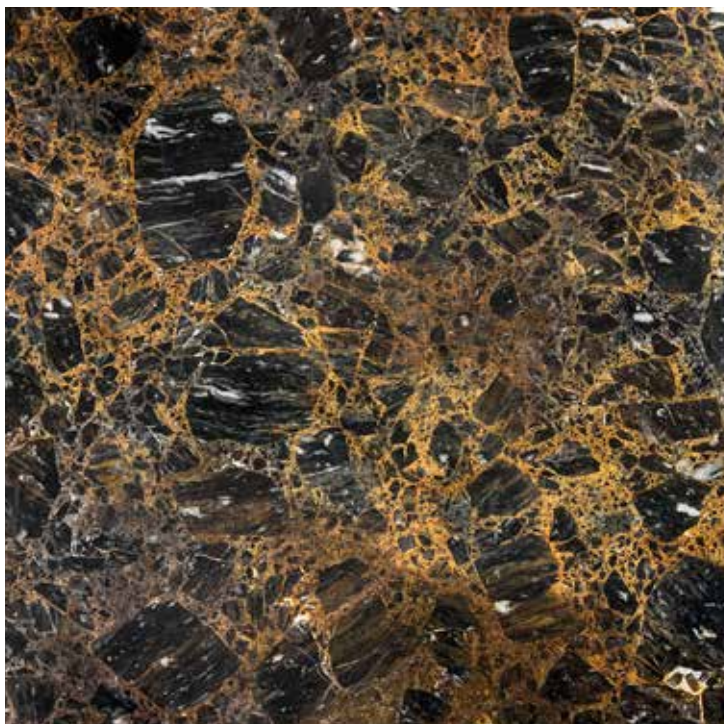
————— MULTI BROWN A —————



————— MULTI BROWN B —————







---

MARSHAL



---

HARIR

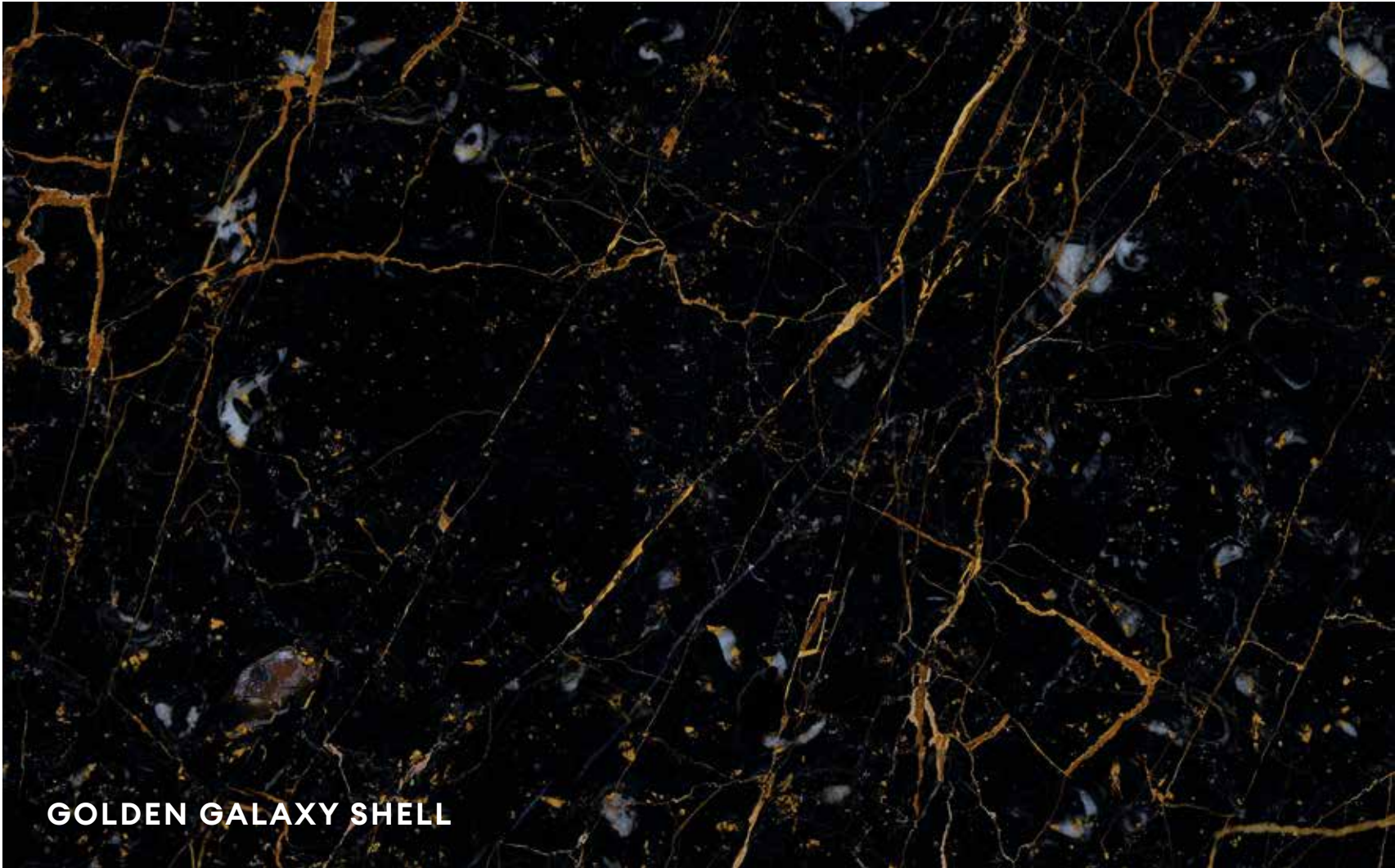




————— GOLDEN HERMES R —————

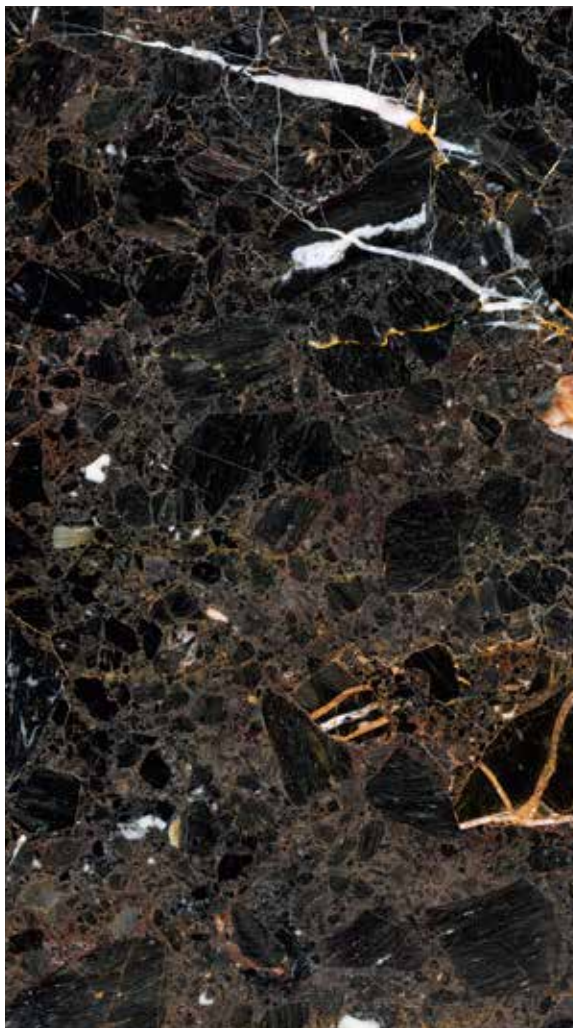


————— PRESIDENT B —————



**GOLDEN GALAXY SHELL**





PICASSO



PIETRA GRAY







PALESSANDRO (DARK)



PALESSANDRO (LIGHT)



BJAY SHAYAN



KAMELIA

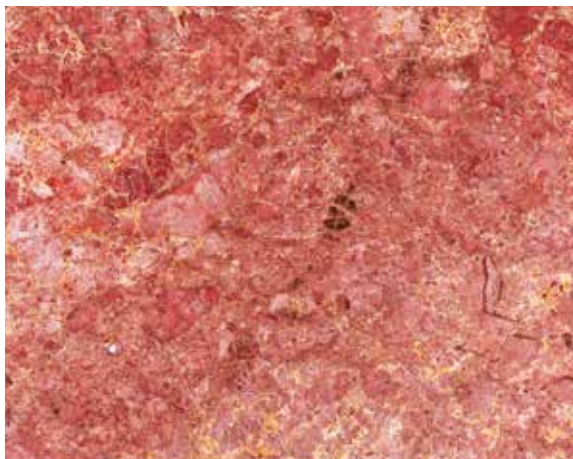


CAPPUCINO NOUVO



VALENICA





GOLDEN ROSE



GOLDEN HERMES Y



RED CONGLOMERA



PRESIDENT A



SMOKEY



SILK EMPRADOR B



SILK EMPERADOR A



LIMESTONE GH





ROMANO



TIRANA BLACK



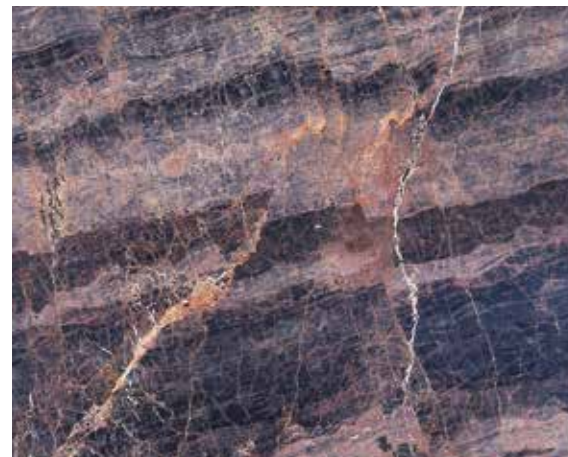
PERSIAN SPIDER



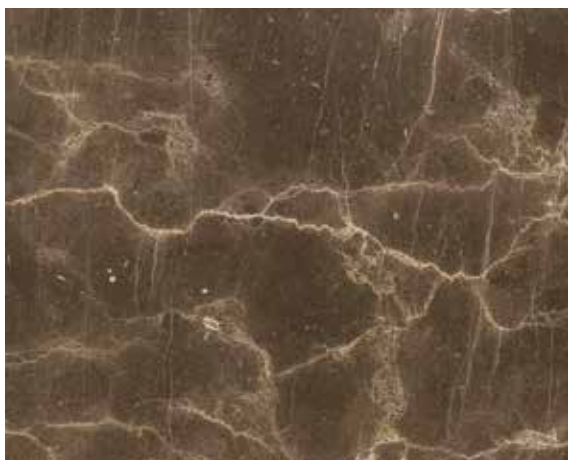
MINIATOR



MIKA



GOLDEN MAGIC

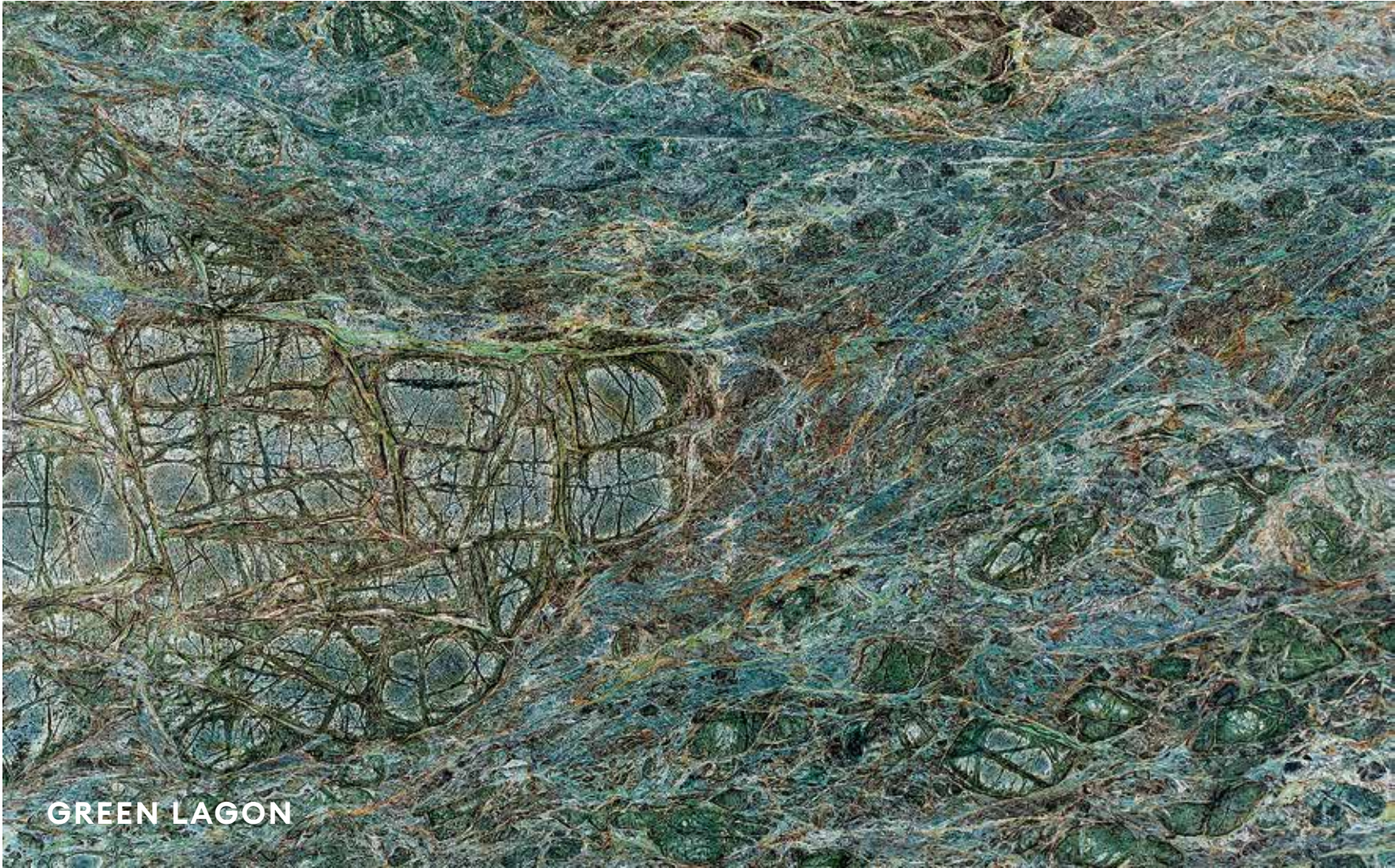


GOLDEN BROWN MK



GOLDEN BROWN DB





**GREEN LAGON**







# TRAVERTINE

COLLECTION

RED TRAVERTINE W





————— SILVER TRAVERTINE W —————



————— LIGHT SILVER TRAVERTINE —————



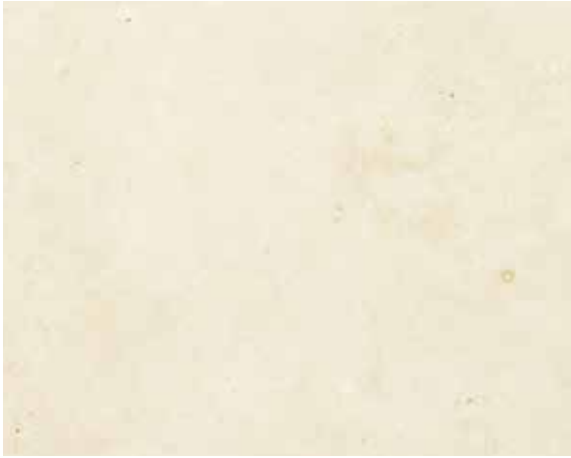


————— SILVER TRAVERTINE CT —————



————— SILVER TRAVERTINE C. AZ —————





DARE BOKHARI



TRAVERTINE C



TAKAB W



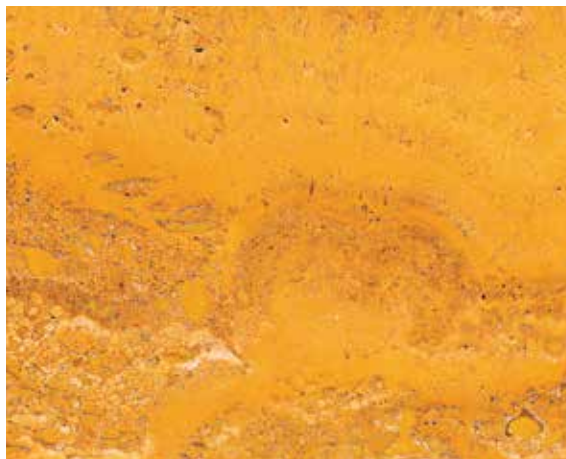
SILVER TRAVERTINE W.AZ







RED TRAVERTINE C



YELLOW TRAVERTINE C



WALNUT TRAVERTINE C



WALNUT TRAVERTINE C.A







The background of the entire image is a classic marbled paper pattern. It features intricate, organic, and somewhat chaotic lines in shades of black, grey, and white, creating a complex, textured appearance. The lines vary in thickness and direction, giving it a sense of depth and movement.

**MC**

**COLLECTION**

SAYMAN



————— PERSIAN CARRARA A —————



————— BIANCO CARRARA —————







WAVY SAYMAN



BLACK & WHITE AG W





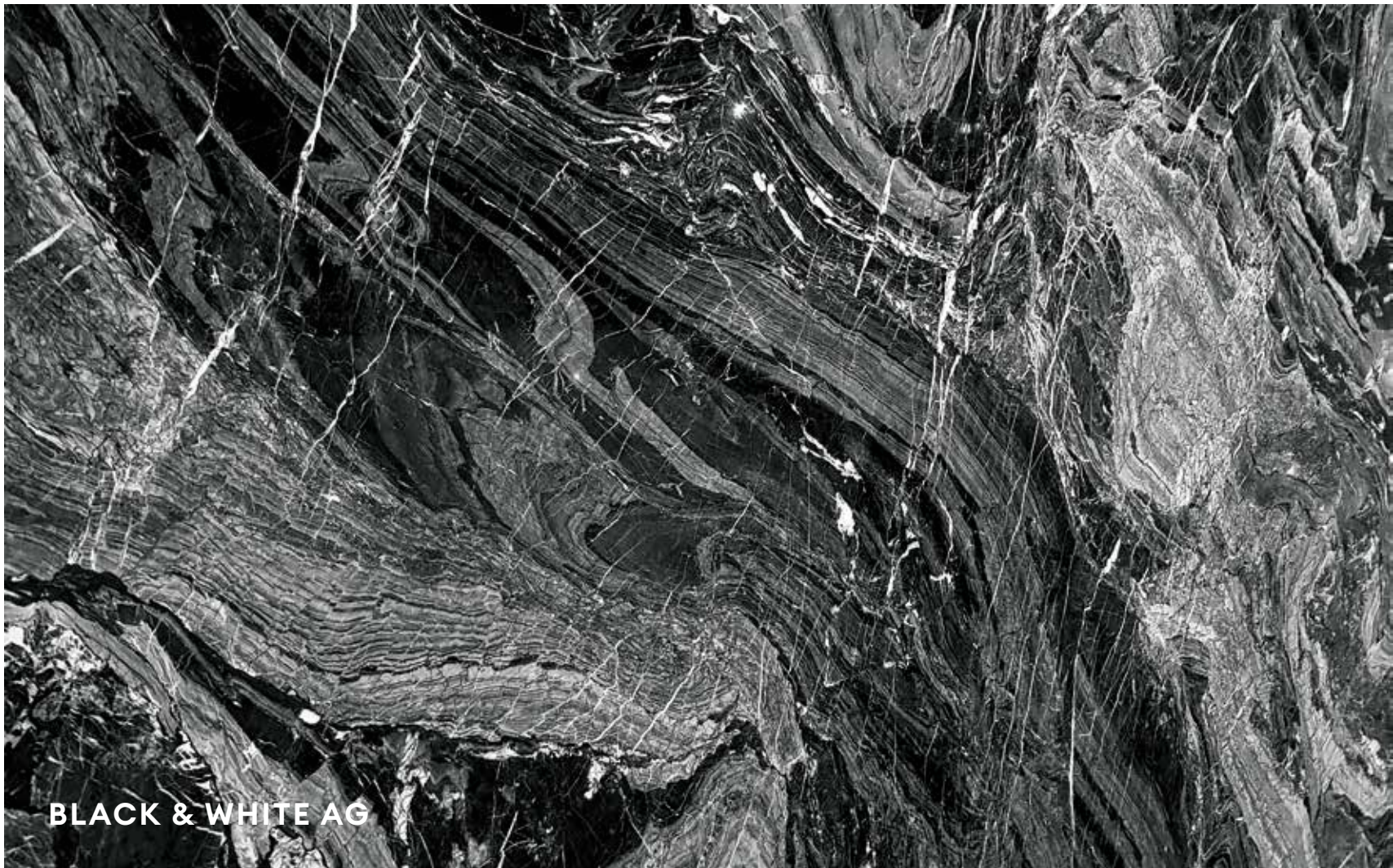
---

WHITE WAVY N



---

PALESSANDRO B



**BLACK & WHITE AG**





BLACK&WHITE WAVY AG



ICE FLOWER



WHITE W AZ



WHITE CLOUD AZ



BLUE WAVY



CRISTALLO



WHITE AG



WHITE AZ A







PALESSANDRO



PERSIAN BIANCO A



PERSIAN BIANCO B



PERSIAN BIANCO C





WHITE WAVY AZ C



WHITE WAVY AZ B



WHITE WAVY AZ A



WHITE GRAY AZ



PERSIAN SCATO



PERSIAN CARRARA B



VOLOKASS



WHITE G AG





ONYX

COLLECTION

DG A



---

W 202

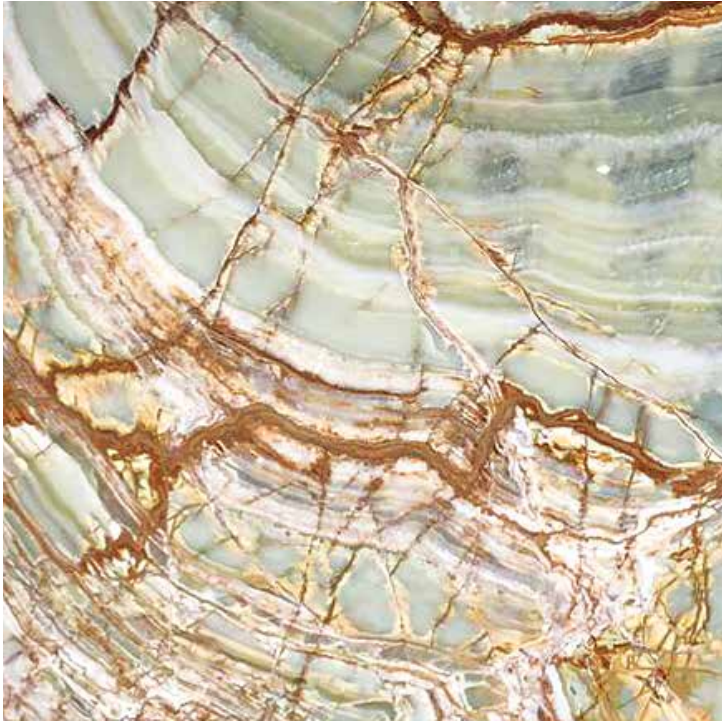


---

G V600







GR 300



GR 502





GR 303



GR 304



DG B



G 300



G V300A





PINKN ONYX



GR 504



W 202



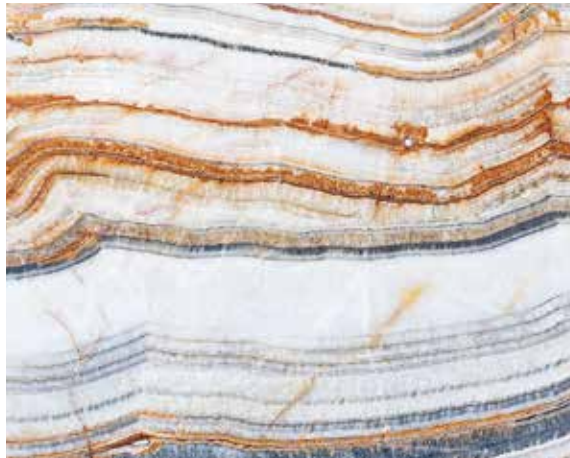
W 401



B 400



BUTTERFLY ONYX



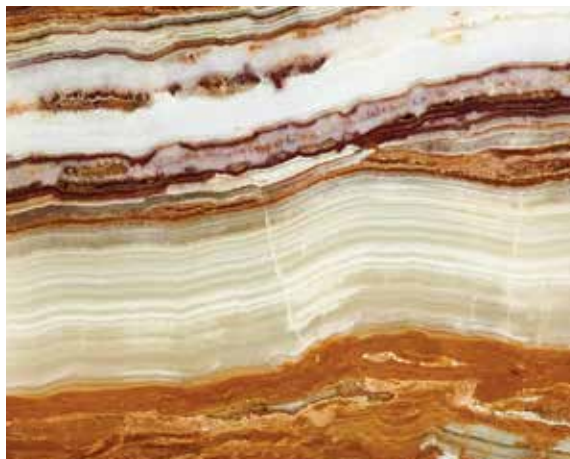
RIVER ONYX



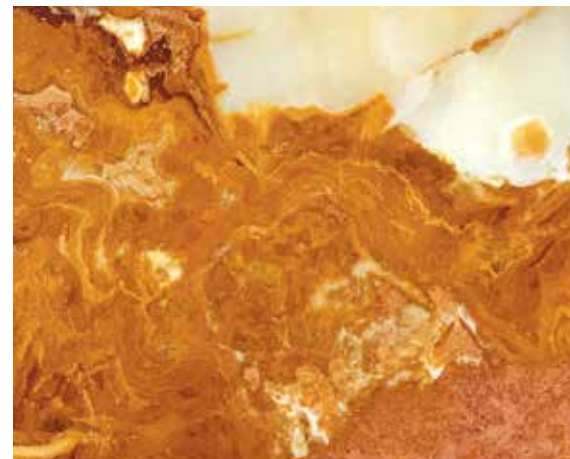
WHITE BUTTERFLY







R 400C



R 405



W 203



W 204





W 301



WB 402



WB 403



WB V 400B





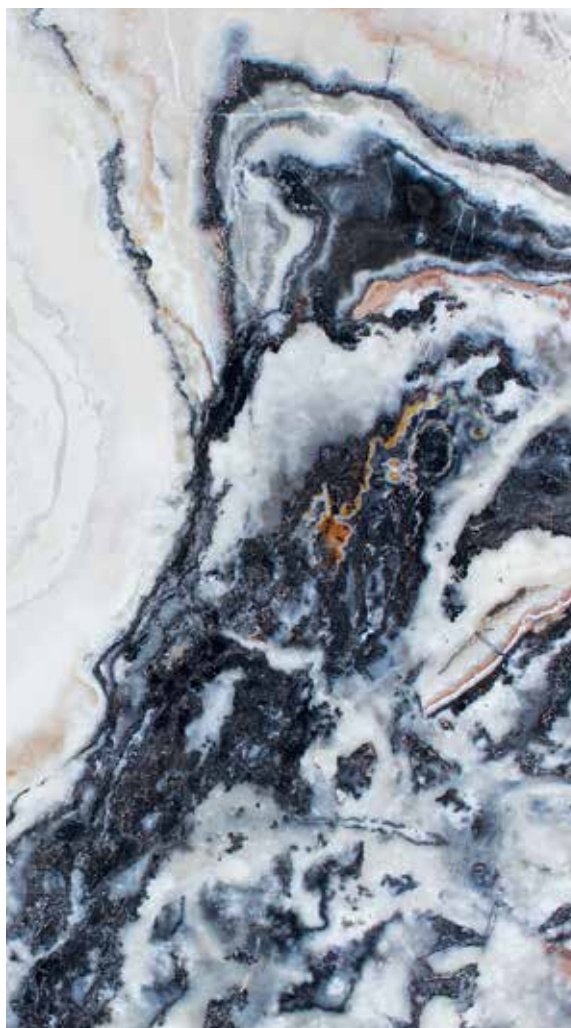


# TRAONYX

COLLECTION

TRAONYX C.Y



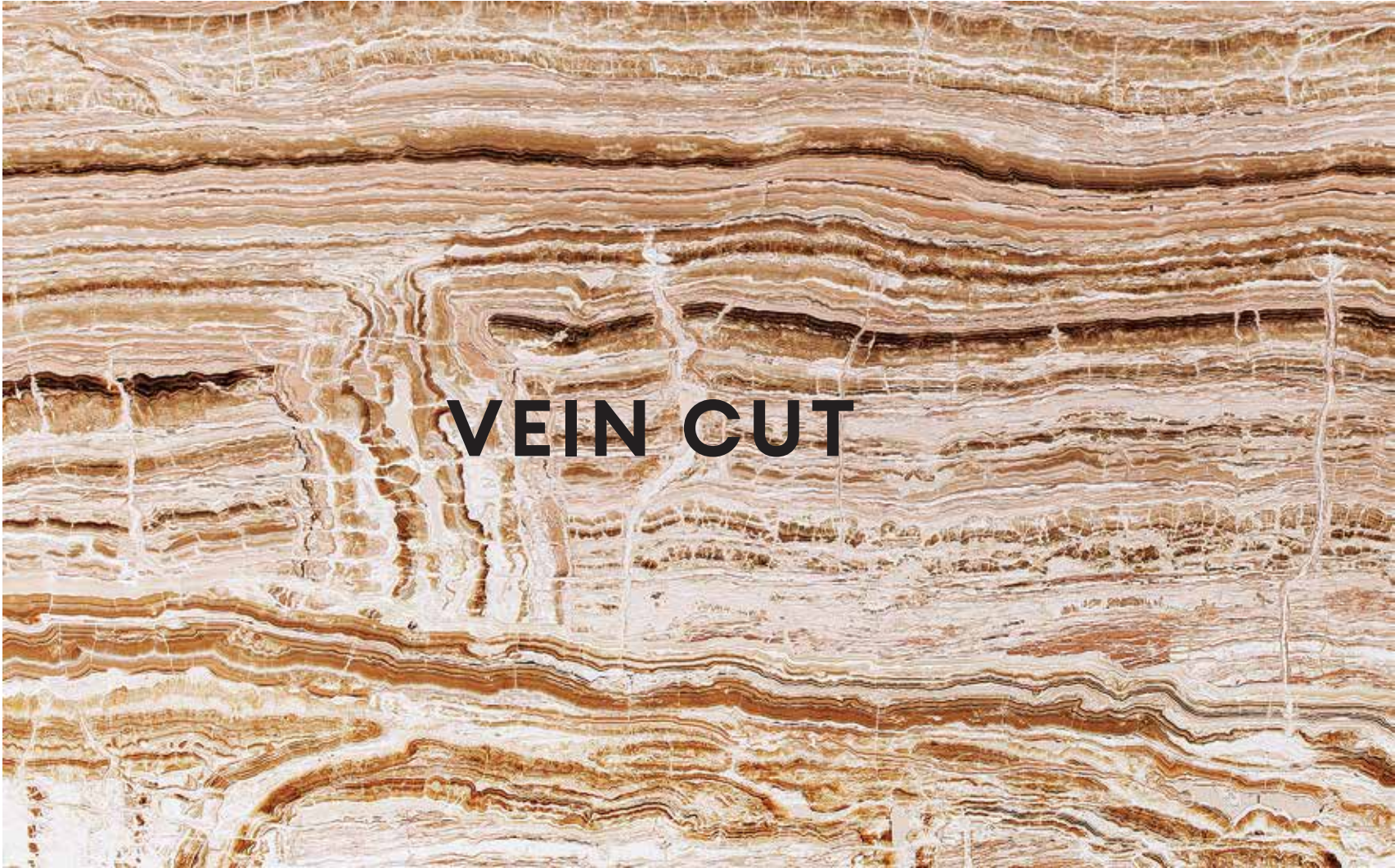


SILVER TRAVERTINE CT



SILVER TRAVERTINE C. AZ





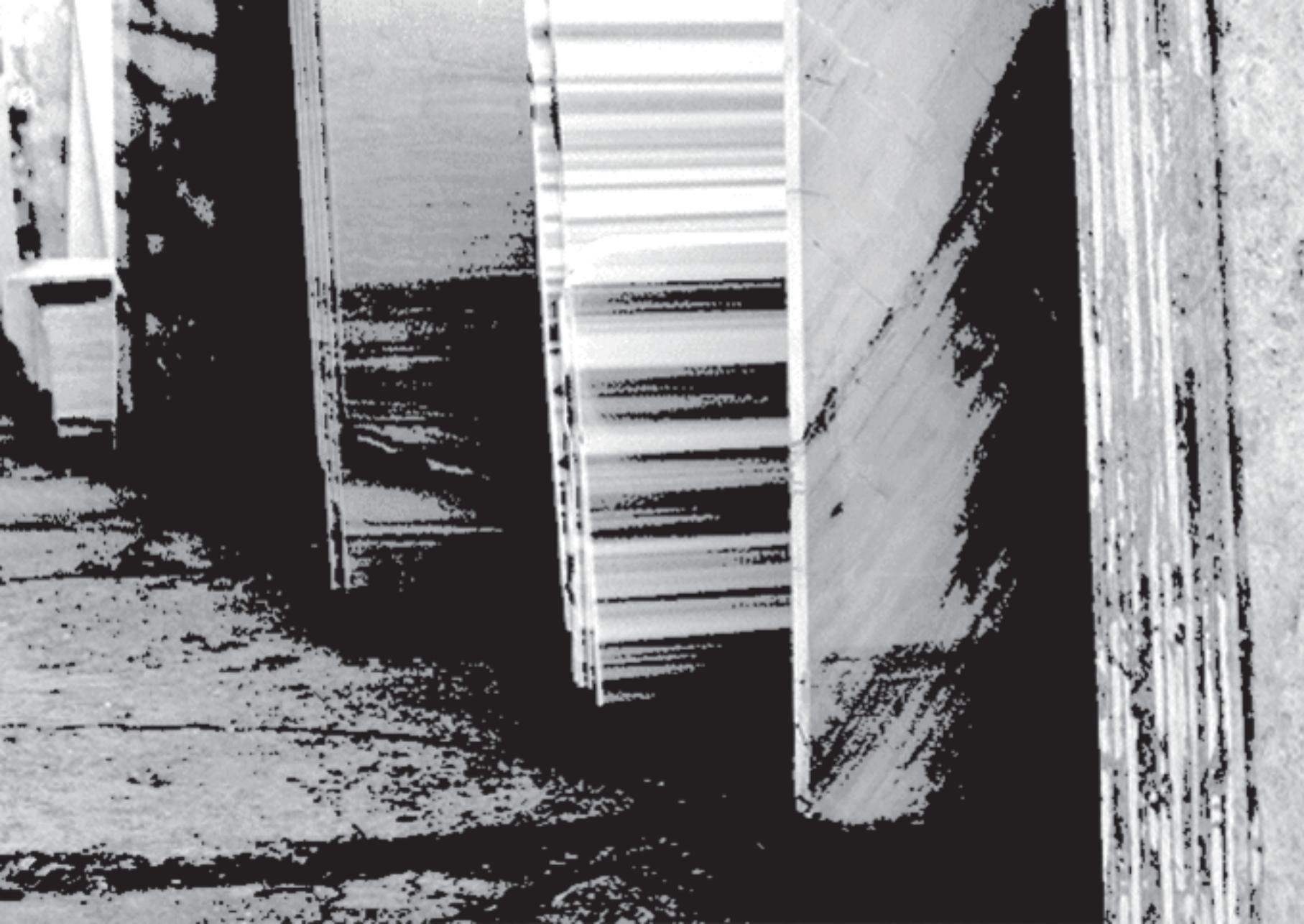
**VEIN CUT**







[www.ksmonyx.com](http://www.ksmonyx.com)







**KSM GROUP**

Hilal Mah. Pasakoy Cad No: 27-28  
Sancaktepe. Istanbul-Turkey

Head Office: +90 216 - 3046 446,  
Call: +90 549 - 4600 621

[www.ksmonyx.com](http://www.ksmonyx.com)  
Email: [info@ksmonyx.com](mailto:info@ksmonyx.com)